

HALE TOWNSHIP

Each township has six files containing six sections in each, and one file containing all 36 sections.

Hale01to06.pdf

Hale07to12.pdf

Hale13to18.pdf

Hale19to24.pdf

Hale25to30.pdf

Hale31to36.pdf

HaleAll36.pdf

The points are listed starting with the point above the SE corner and continuing in a counter-clockwise rotation around the section. This normally begins with the East point, Northeast, then North, but may also include Witness Corners, and/or Meander Corners.

Definitions

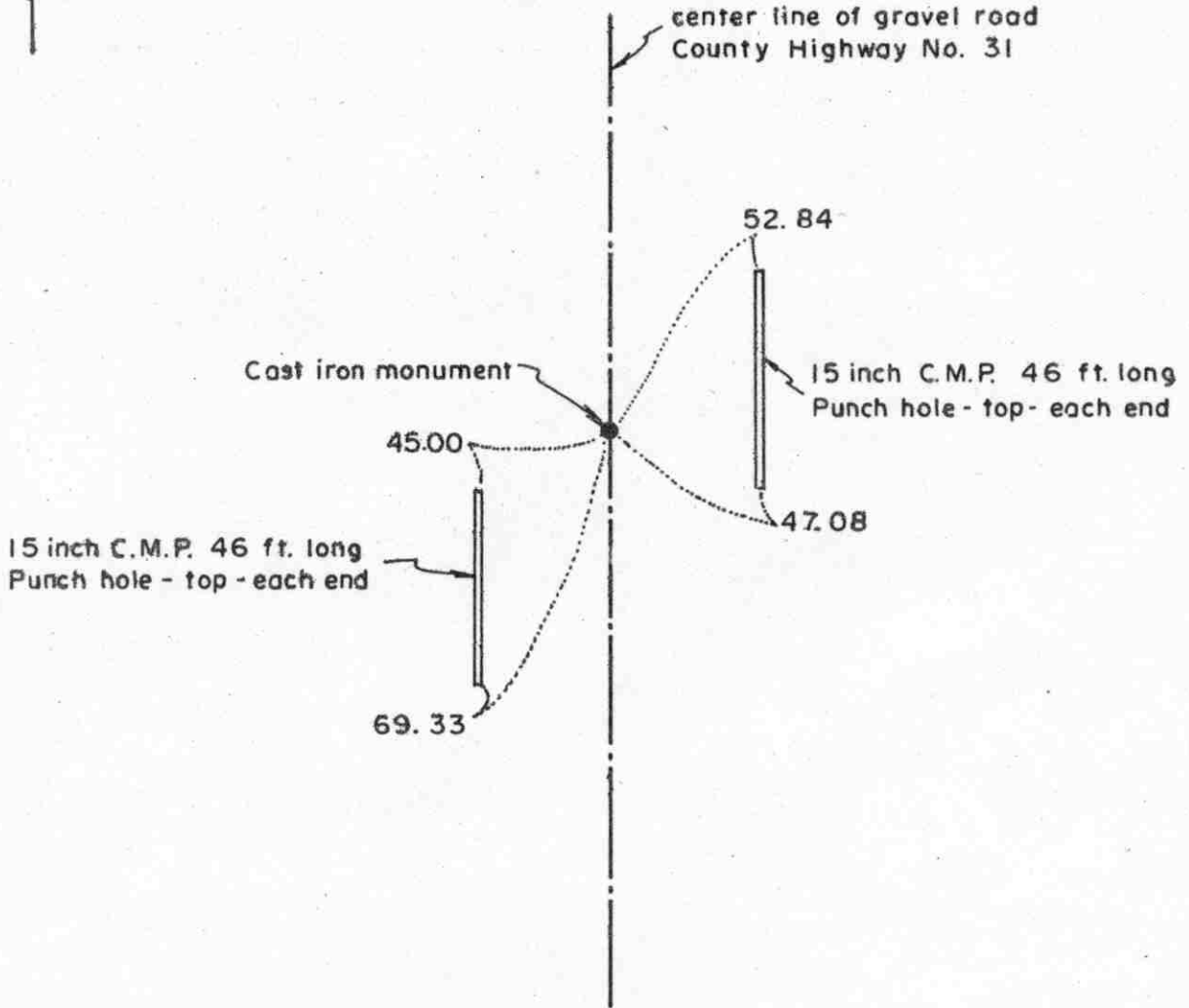
Witness Corner: A witness corner “stands in” when the true corner cannot be monumented or occupied because of difficult terrain or obstruction of the corner sight. The witness corner must be on the section line and is usually 5 or 10 chains away from the true corner.

Meander Corner: The intersection of a township, range, or section line and the banks of a navigable stream or meandering body of water.

Certificate of Location of Government Corner



SKETCH OF REFERENCE TIES
(NO SCALE)



Statement of evidence relative to this corner location on sheet 2

I hereby certify that this document was prepared by me or under my direct supervision.

Willard Pellinen
Willard Pellinen
McLeod County Surveyor
License No. 9626

Date 2/8/89

OFFICE OF THE COUNTY RECORDER
MCLEOD COUNTY, MINNESOTA.

I hereby certify that this document was filed in this office at 9 o'clock A.M. on the 15th day of Feb., 19 89.

Carmen Ostlie, County Recorder

By _____, Deputy

Document No. 226950

Certificate of Location of Government Corner

This corner was originally established in September 1855, by John Ryan of the Government Land Office. He set a post and had reference ties to 2 bearing trees.

In 1899, E.L.Higgins surveyed in Section 1 and he set the east quarter corner by single proportionate measure. He had a distance of 2630 feet to the northeast and to the southeast corners of Section 1.

In December 1968, we measured the east line of Section 1 and set a temporary east quarter corner.

In October, 1970, we dug for the corner, John Tupa from Hutchinson, with a backhoe. We found a rotted wood stake down 3 feet below the road surface. We took reference ties and in May, 1972 we set a McLeod County cast iron monument.

On June 1, 1988 we took new reference ties, road to be graded, and measured the east line of Section 1. Our distance to the northeast corner of Section 1 was 2632.75 and to the southeast corner it was 2630.24.

On July 28, 1988, we reset the corner, setting a 1/2 inch by 14 inch iron pipe, and took new reference ties.

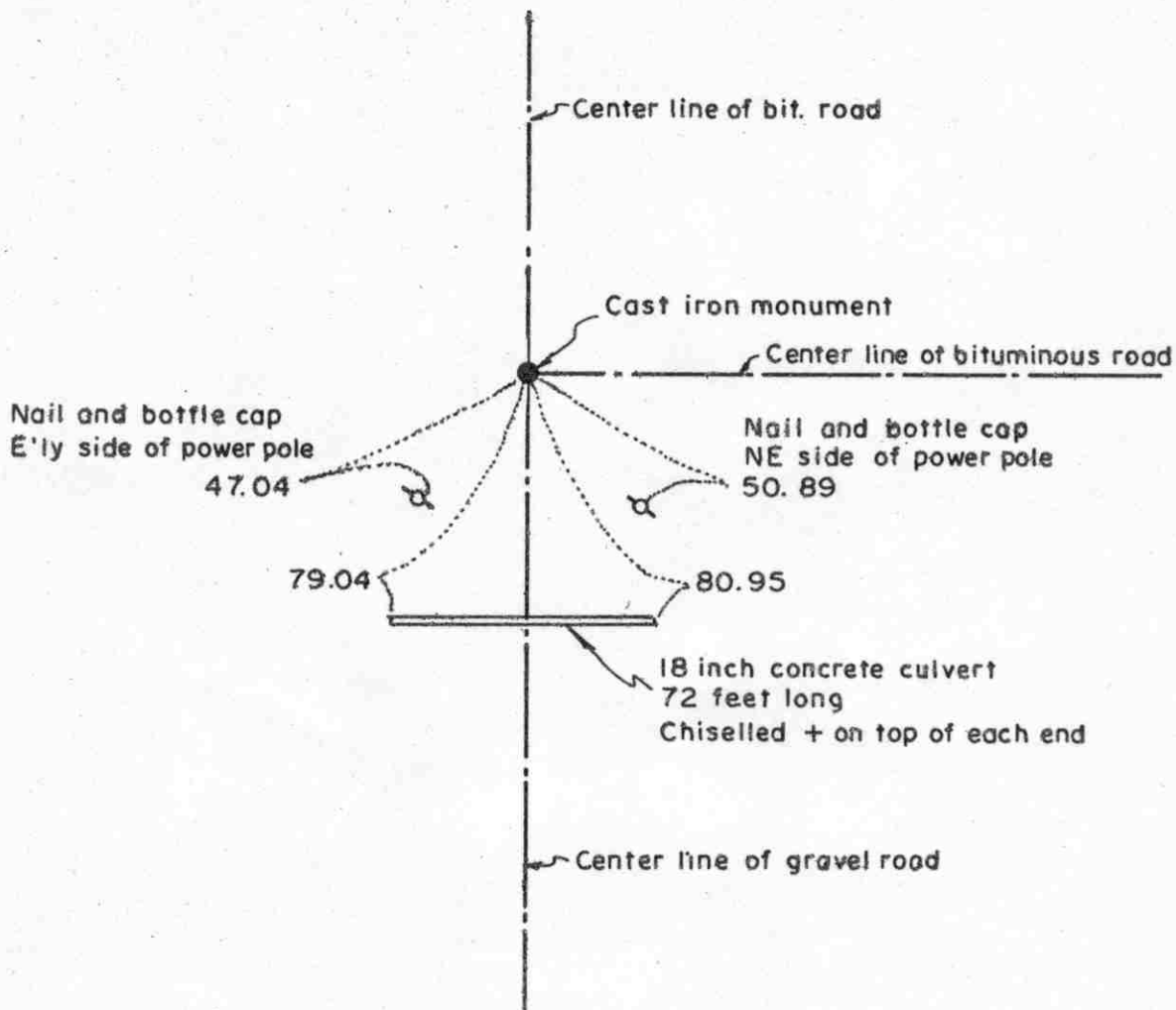
On August 5, 1988, we replaced the iron pipe with a McLeod County cast iron monument, with the top of the monument down 4 inches below the road surface. We also set a 1/2 inch by 14 inch iron pipe below the monument.

We feel the wood stake we found was set by E.L.Higgins in 1899 and it has perpetuated the true location of the east quarter corner.

Certificate of Location of Government Corner

SKETCH OF REFERENCE TIES

(NO SCALE)



Statement of evidence relative to this corner location on sheet 2

I hereby certify that this document was prepared by me or under my direct supervision.

Willard Pellinen

Willard Pellinen
McLeod County Surveyor
License No. 9626

Date 2/8/89

OFFICE OF THE COUNTY RECORDER
MCLEOD COUNTY, MINNESOTA.

I hereby certify that this document was filed in this office at 9 o'clock A.M. on the 15th day of Feb., 1989.

Carmine Dettie, County Recorder

By _____, Deputy

Document No. 226949

NORTHEAST _____ corner, Section 1, Township 117 North, Range 28 West

Certificate of Location of Government Corner

This corner was established in September, 1855, by John Ryan of the Government Land Office. His notes state he set post and took reference ties to 4 bearing trees.

1899 survey by E.L.Higgins shows an iron at this corner. He had a distance of 2630 feet to the east quarter corner of Section 1.

In December, 1968, we set a temporary corner at the center line intersection of the roads.

In June, 1971, we dug for the corner, John Tupa from Hutchinson, with a backhoe. Down at the original ground we found an angle iron. We took reference ties to the iron.

In July, 1971, we set a McLeod County cast iron monument over the found angle iron (at the surface of the road.).

On June 1, 1988, we checked ties and took additional ties to the monument. Road to be graded.

On July 28, 1988, (after road construction) we found the cast iron monument in good condition and took new reference ties.

We feel the angle iron we found in 1971 was the same iron as shown in 1899 survey notes by E.L.Higgins and has perpetuated the correct location of the northeast corner of Section 1. Our measured distance to the east quarter corner of Section 1 also is within 2 feet of the 1899 distance by E.L. Higgins.

Certificate of Location of Government Corner



SKETCH OF REFERENCE TIES

(NO SCALE)

SECTION 36 T 118 R 28

Nail and bottle cap in north face
of 6 inch elm, up 3 feet

19.72

cast iron monument

Nail and bottle cap 19.86
SE face of 14 inch
box elder, up 3 feet



3.38
Nail and bottle cap
North face of 12 inch
box elder, up 3 feet



SECTION 1 T 117 R 28

Statement of evidence relative to this corner location on sheet 2

I hereby certify that this document
was prepared by me or under my
direct supervision.

Willard Pellinen

Willard Pellinen
McLeod County Surveyor
License No. 9626

Date July 23, 1992

OFFICE OF THE COUNTY RECORDER
MCLEOD COUNTY, MINNESOTA.

I hereby certify that this document was filed in this
office at 9 o'clock A.M. on the 30th day
of July, 1992.

Carmen Ostlie, County Recorder

By _____, Deputy

Document No. 246806

Certificate of Location of Government Corner

1855. John Ryan of the General Land Office established this corner. He set a post, in wet bottom land, and marked 2 aspens for bearing trees.

June 16, 1978. Jerry Uhde, Wright County Surveyor, set a cast iron monument from record measurements and occupation lines and took reference ties.

August 26, 1991. We found the monument in good condition flush with the ground. All the reference ties were gone so we took new ties.

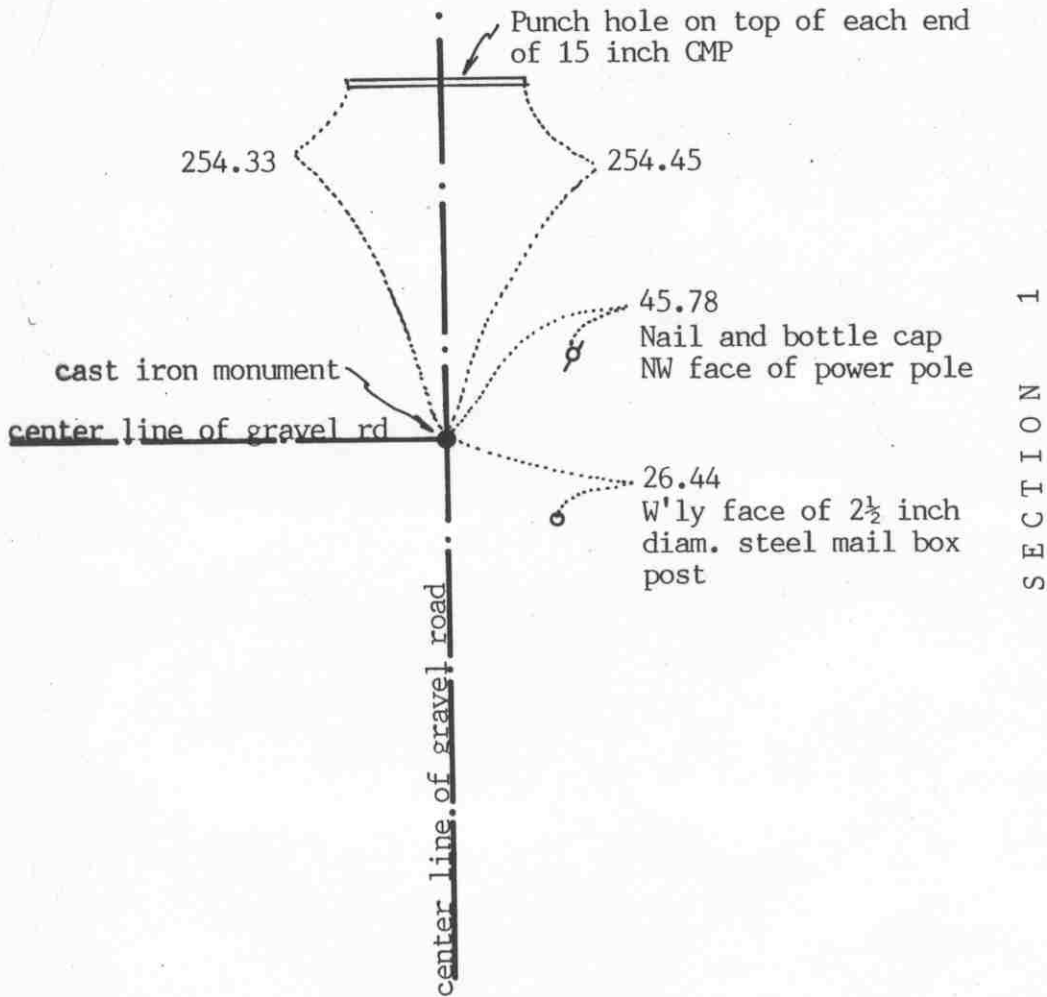
Certificate of Location of Government Corner

SKETCH OF REFERENCE TIES

(NO SCALE)



SECTION 2



SECTION 1

Statement of evidence relative to this corner location on sheet 2

I hereby certify that this document was prepared by me or under my direct supervision.

Willard Pellinen

Willard Pellinen
McLeod County Surveyor
License No. 9626

Date July 12, 1992

OFFICE OF THE COUNTY RECORDER
MCLEOD COUNTY, MINNESOTA.

I hereby certify that this document was filed in this office at 9 o'clock A. M. on the 15th day of July, 1992.

Armen Otis, County Recorder

By _____, Deputy

Document No. 246436

EAST QUARTER corner, Section 2, Township 117 North, Range 28 West

Certificate of Location of Government Corner

1856. Oscar Taylor of the Government Land Office established this corner. He set a post and marked 2 linden trees for bearing trees.

December 27, 1899. E. L. Higgins, county surveyor, found the bearing trees and set a steel corner.

May 5, 1922. Carlisle Madson, Sr., surveyor, found an iron bar driven through an old oak stake.

January, 1940. Steel corner was found during a road survey.

September 18, 1974. McCombs Knutson Associates (Dickman Knutson, county surveyor) found a 1 inch iron bar down 2 feet below the road surface. They took available reference ties. This was on the center line of the east-west road, about 2 feet west of the center line of the north-south road.

November 7, 1974. Knutson set a McLeod County cast iron monument over the iron bar.

August 22, 1991. We found the cast iron monument in good condition 6 inches below the surface of the gravel road. We took new reference ties.

The cast iron monument is accepted as marking the correct location of the quarter corner. It was set over an older monument which has perpetuated the correct location.

NORTHEAST corner, Section 2, Township 117 North, Range 28 West

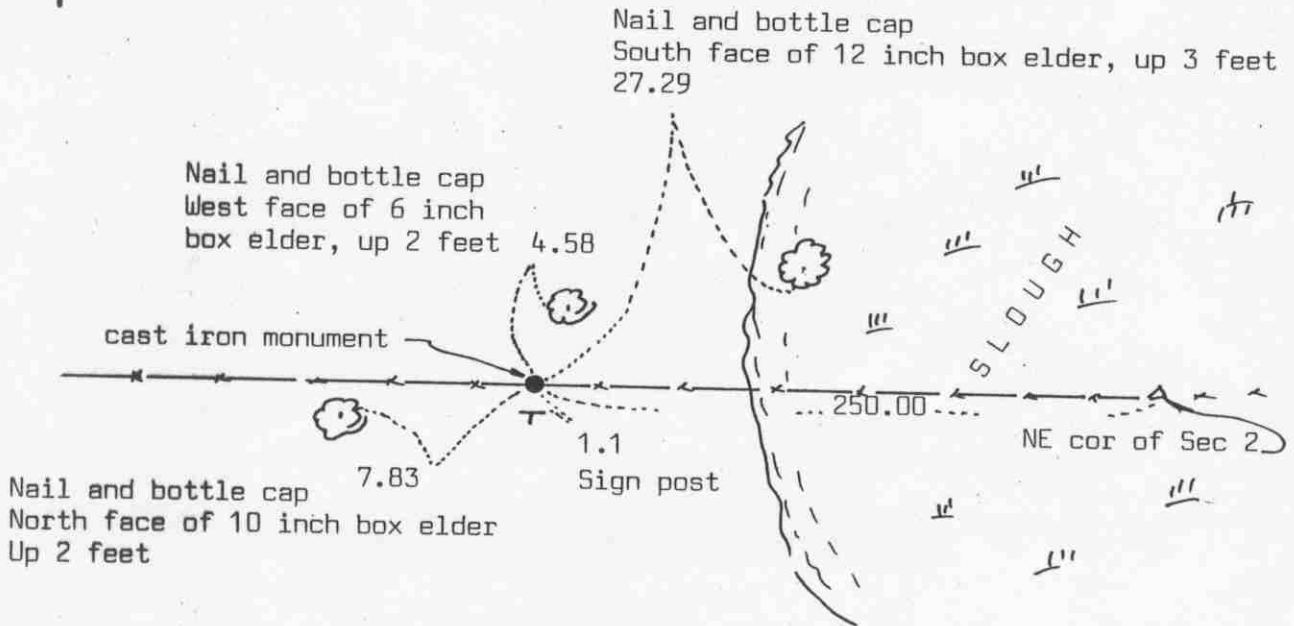
Certificate of Location of Government Corner



SKETCH OF REFERENCE TIES

(NO SCALE)

TIES ARE TO REFERENCE MONUMENT, 250.00 WEST OF SECTION COR.



Statement of evidence relative to this corner location on sheet 2

I hereby certify that this document was prepared by me or under my direct supervision.

Willard Pellinen

Willard Pellinen
McLeod County Surveyor
License No. 9626

Date July 26, 1992

OFFICE OF THE COUNTY RECORDER
MCLEOD COUNTY, MINNESOTA.

I hereby certify that this document was filed in this office at 9 o'clock A.M. on the 30th day of July, 1992.

Armen Ostlie, County Recorder

By _____, Deputy

Document No. 246807

NORTHEAST corner, Section 2, Township 117 North, Range 28 West***Certificate of Location of Government Corner***

1855. John Ryan of the General Land Office ran the north line of Township 117 North, Range 28 West. He did not set the northeast corner of Section 2, which fell in a pond.

June 15, 1978. Jerry Uhde, Wright County Surveyor, set a cast iron monument, 250.00 feet west of the section corner using record measurements and occupation lines. He set a sign 1 foot more or less south of the monument and took reference ties.

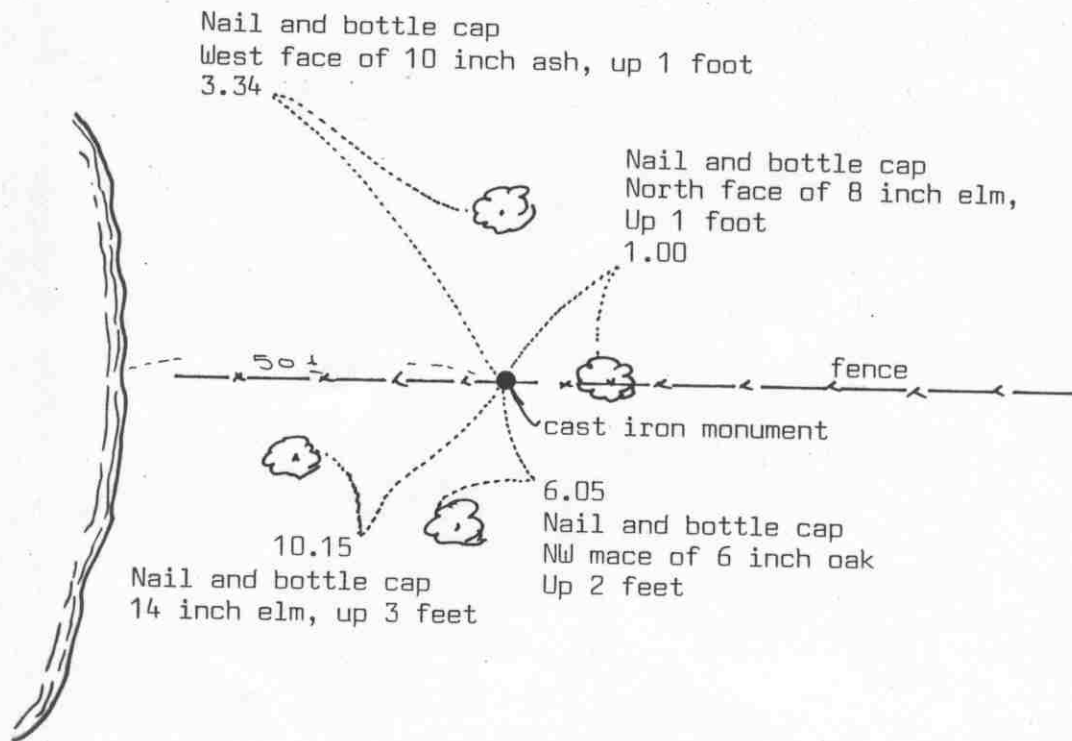
August 26, 1991. We found the monument in good condition, 1.1 foot north of the sign post, but all the other reference ties were destroyed. We took new available ties.

Certificate of Location of Government Corner

SKETCH OF REFERENCE TIES
(NO SCALE)



BUTTERNUT LAKE



Statement of evidence relative to this corner location on sheet 2

I hereby certify that this document was prepared by me or under my direct supervision.

Willard Pellinen

Willard Pellinen
McLeod County Surveyor
License No. 9626

Date July 26, 1992

OFFICE OF THE COUNTY RECORDER
MCLEOD COUNTY, MINNESOTA.

I hereby certify that this document was filed in this office at 9 o'clock A.M. on the 30th day of July, 1992.

Armen Ostlie, County Recorder

By _____, Deputy

Document No. 246808

Certificate of Location of Government Corner

Meander corner No. 15, north line of Section 2, east of Butternut Lake, west of northeast corner of Section 2.

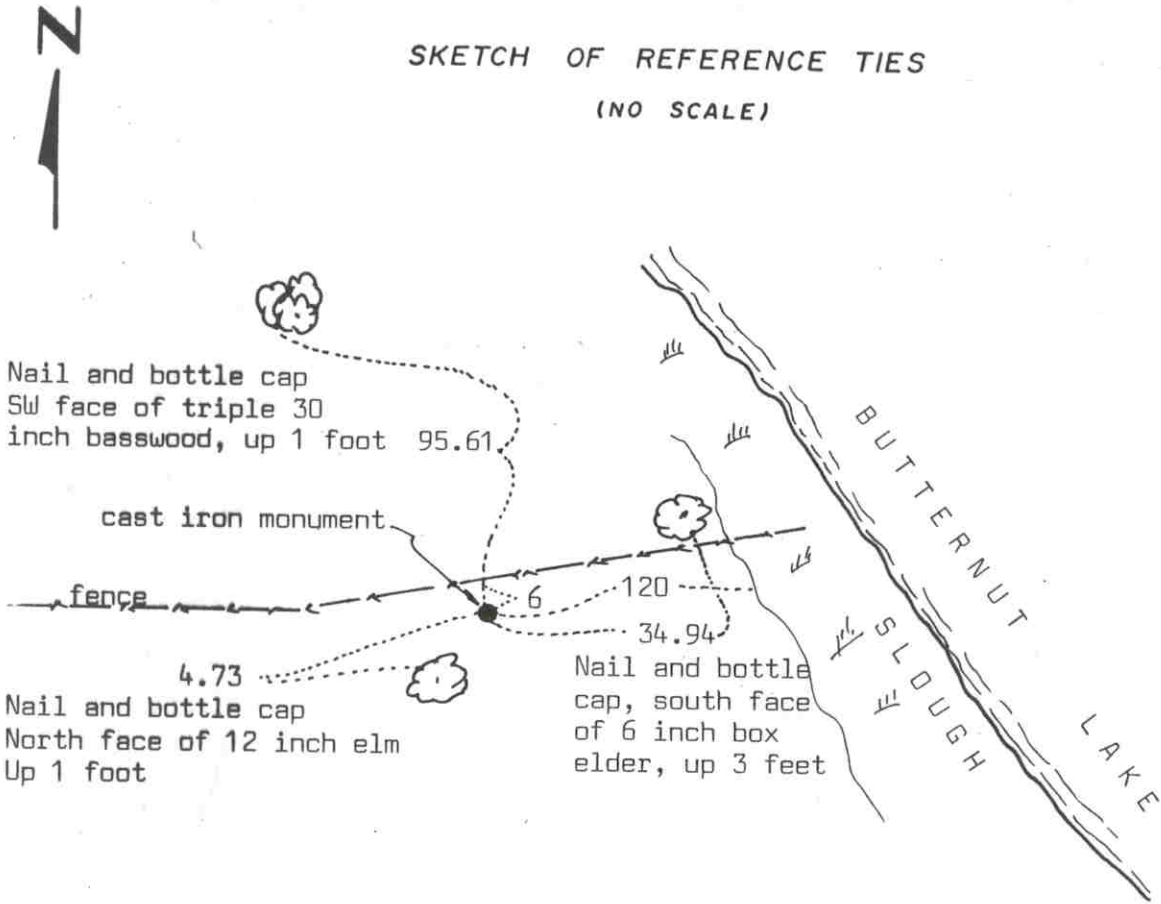
1855. John Ryan of the General Land Office set a post and marked a hickory tree and a linden tree for bearing trees.

June 15, 1978. Jerry Uhde, Wright County Surveyor, set a cast iron monument from record measurements and occupation lines, and took reference ties.

August 26, 1991. We found the monument in good condition and took new reference ties.

Certificate of Location of Government Corner

SKETCH OF REFERENCE TIES
(NO SCALE)



Statement of evidence relative to this corner location on sheet 2

I hereby certify that this document was prepared by me or under my direct supervision.

Willard Pellinen
Willard Pellinen
McLeod County Surveyor
License No. 9626

Date July 26, 1992

OFFICE OF THE COUNTY RECORDER
MCLEOD COUNTY, MINNESOTA.

I hereby certify that this document was filed in this office at 9 o'clock A.M. on the 30th day of July, 1992.

Carmen O'Brien, County Recorder

By _____, Deputy

Document No. 246809

Certificate of Location of Government Corner

Meander corner No. 16, along north line of Section 2, west of Butternut Lake, east of northwest corner of Sec. 2.

1855. John Ryan of the General Land Office set a post and marked 2 elms for bearing trees.

June 16, 1978. Jerry Uhde, Wright County Surveyor, set a cast iron monument from record measurements and took reference ties.

August 26, 1991. We found monument in good condition flush with the surface and took new reference ties.

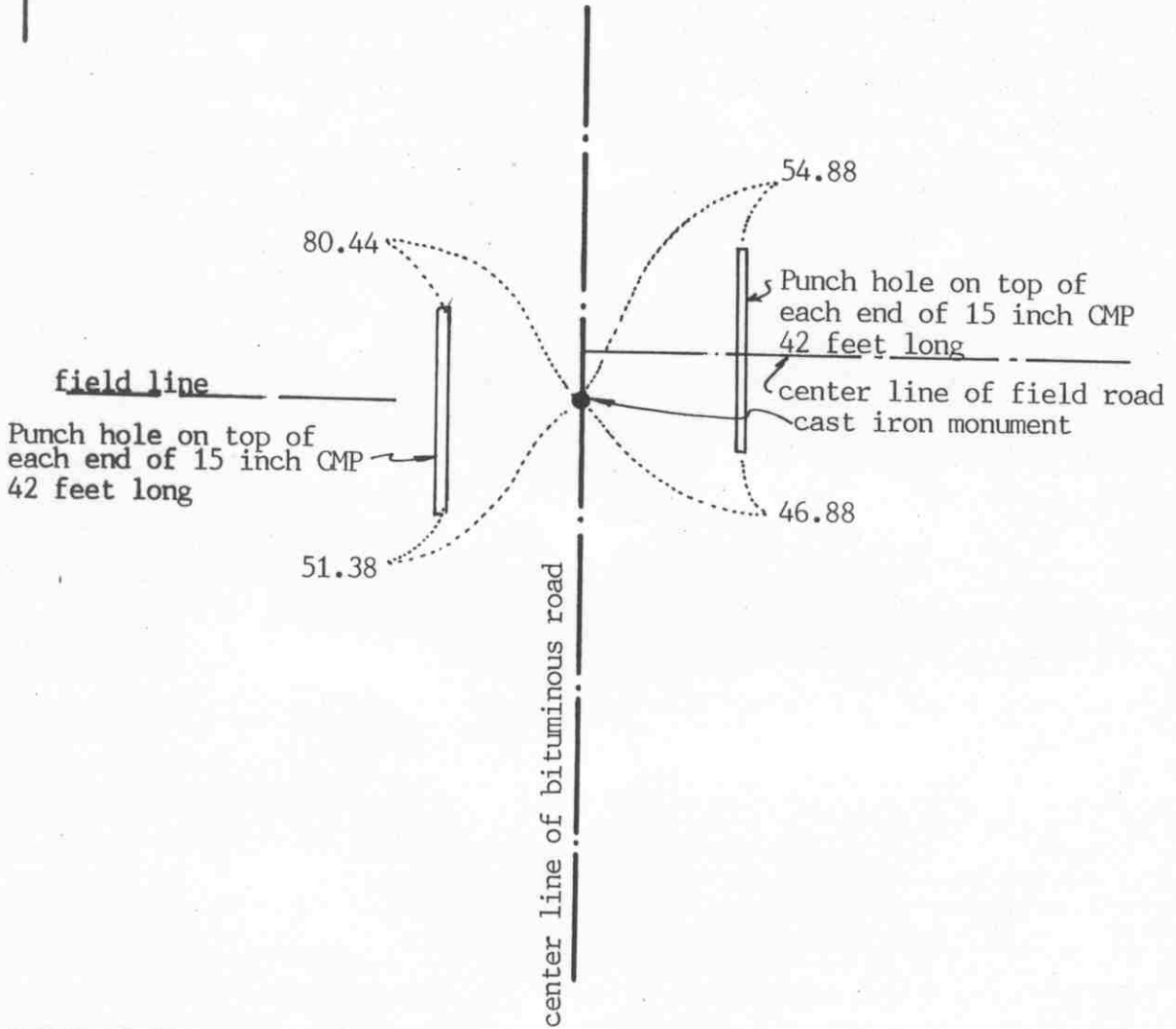
Certificate of Location of Government Corner

SKETCH OF REFERENCE TIES
(NO SCALE)



SECTION 3

SECTION 2



Statement of evidence relative to this corner location on sheet 2

I hereby certify that this document was prepared by me or under my direct supervision.

Willard Pellinen
Willard Pellinen
McLeod County Surveyor
License No. 9626

Date June 8, 1992

OFFICE OF THE COUNTY RECORDER
MCLEOD COUNTY, MINNESOTA.

I hereby certify that this document was filed in this office at 9 o'clock A.M. on the 20th day of July, 1992.

Armen Kostlie, County Recorder

By _____, Deputy

Document No. 246511

Certificate of Location of Government Corner

1856. Oscar Taylor of the General Land Office set a post and marked 2 linden trees for bearing trees.

May 5, 1922. Carlisle Madson, Sr., surveyor, set the quarter corner half way between the section corners.

May, 1972. McCombs Knutson Associates dug for the corner and found a stone within a tenth of a foot of being half way between the section corners. They took available reference ties.

January 20, 1976. Knutson set a PK nail on the surface of the bituminous road and took additional ties.

July 9, 1976. Knutson set a McLeod County cast iron monument.

November 20, 1986. We set a spike at the corner using our section measurements to set the corner. Corner and old ties had been destroyed by road construction.

June 4, 1987. We set a McLeod County cast iron monument and took reference ties. We set a $\frac{1}{2}$ inch diameter iron pipe below the monument.

August 19, 1991. We found the monument in good condition and checked the reference ties.

NORTHEAST corner, Section 3, Township 117 North, Range 28 West

Certificate of Location of Government Corner

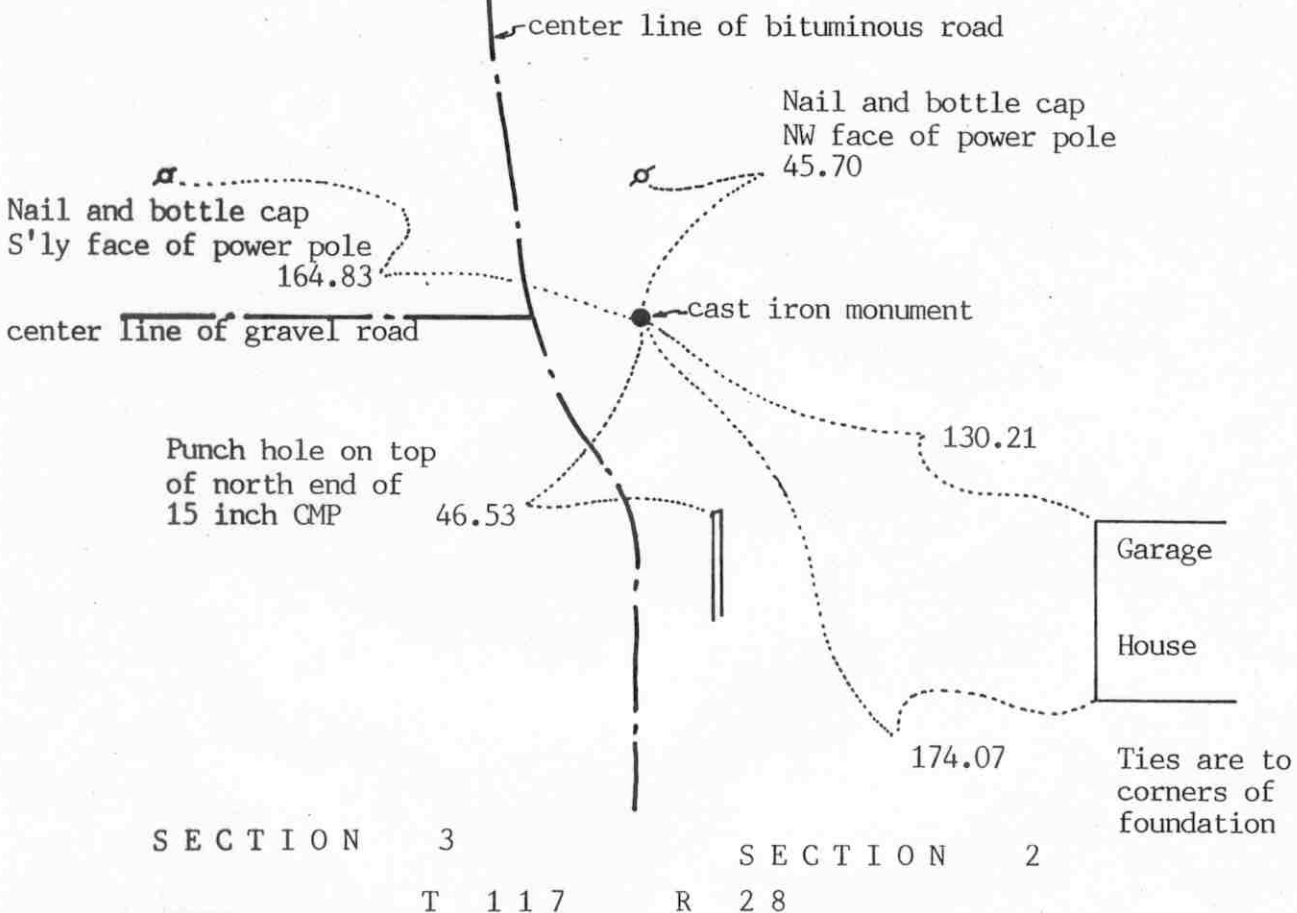
SKETCH OF REFERENCE TIES (NO SCALE)



SECTION 34

SECTION 35

T 118 R 28



Ties are to corners of foundation

Statement of evidence relative to this corner location on sheet 2

I hereby certify that this document was prepared by me or under my direct supervision.

Willard Pellinen

Willard Pellinen
McLeod County Surveyor
License No. 9626

Date June 6, 1992

OFFICE OF THE COUNTY RECORDER
MCLEOD COUNTY, MINNESOTA.

I hereby certify that this document was filed in this office at 9 o'clock A.M. on the 15th day of July, 1992.

Carmen Ostlie, County Recorder

By _____, Deputy

Document No. 246437

Certificate of Location of Government Corner

1855. John Ryan of the General Land Office established this corner. He set a post and marked 2 elms, a linden and an ironwood for bearing trees.

May 1922. Carlisle Madson, Sr., surveyor, found a 6 inch by 8 inch stone and placed an 8 inch stone on top with 2 drill holes in it.

May 12, 1976. Jerry Uhde, Wright County Surveyor, found an 8 inch stone with 2 drill holes and a pointed stone below the first stone.

May 17, 1976. Uhde set a cast iron monument over the stones.

July 12, 1985. We found the monument and took reference ties.

May 28, 1987. We took additional reference ties.

August 19, 1991. We found the monument in good condition and checked the reference ties.

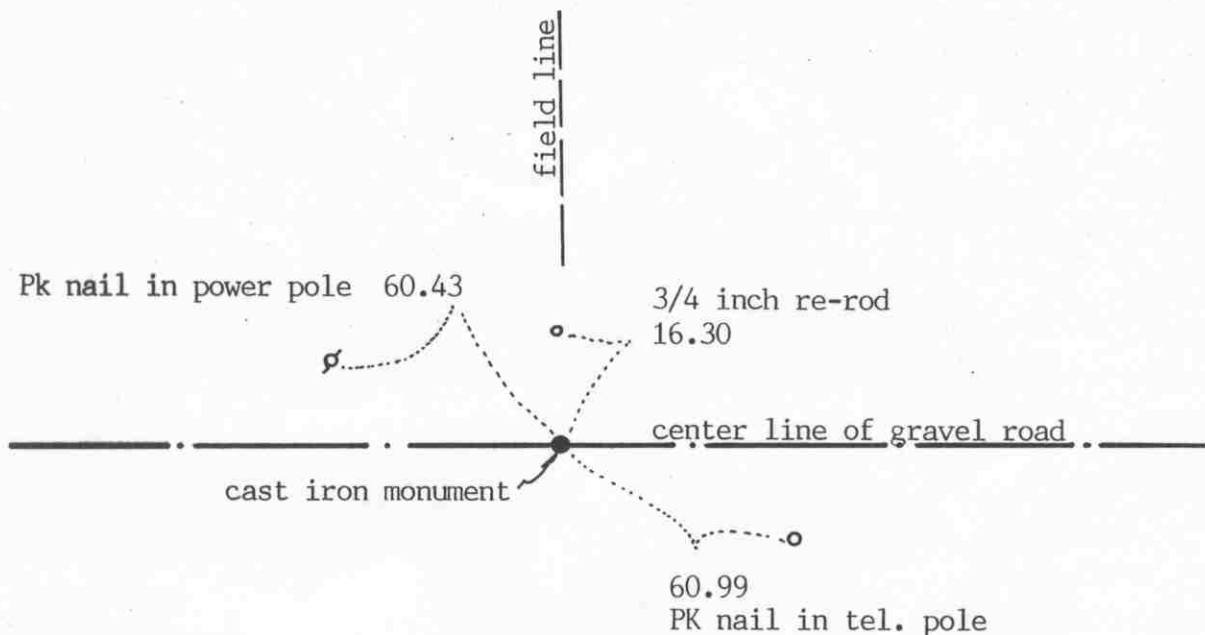
NORTH QUARTER corner, Section 3, Township 117 North, Range 28 West

Certificate of Location of Government Corner



SKETCH OF REFERENCE TIES (NO SCALE)

SECTION 34 T 118 R 28



SECTION 3 T 117 R 28

Statement of evidence relative to this corner location on sheet 2

I hereby certify that this document was prepared by me or under my direct supervision.

Willard Pellinen
 Willard Pellinen
 McLeod County Surveyor
 License No. 9626
 Date June 6, 1992

OFFICE OF THE COUNTY RECORDER
 MCLEOD COUNTY, MINNESOTA.

I hereby certify that this document was filed in this office at 9 o'clock A.M. on the 15th day of July, 1992.

Carmen Ostlie, County Recorder
 By _____, Deputy
 Document No. 246438

Certificate of Location of Government Corner

1856. John Ryan of the General Land Office set a post and marked two elms for bearing trees.

1972. Willard Mattson, Wright County Surveyor, set a cast iron monument at the corner.

May, 1976. Jerry Uhde, Wright County Surveyor, removed the cast iron monument and dug for the corner with a back hoe. He found no other evidence of the corner.

July 7, 1976. Uhde reset the cast iron monument.

August 19, 1991. We found the monument in good condition and checked the reference ties.

There being no evidence to the contrary, we accept the monument set by the Wright County Surveyor as marking the correct location of the quarter corner.

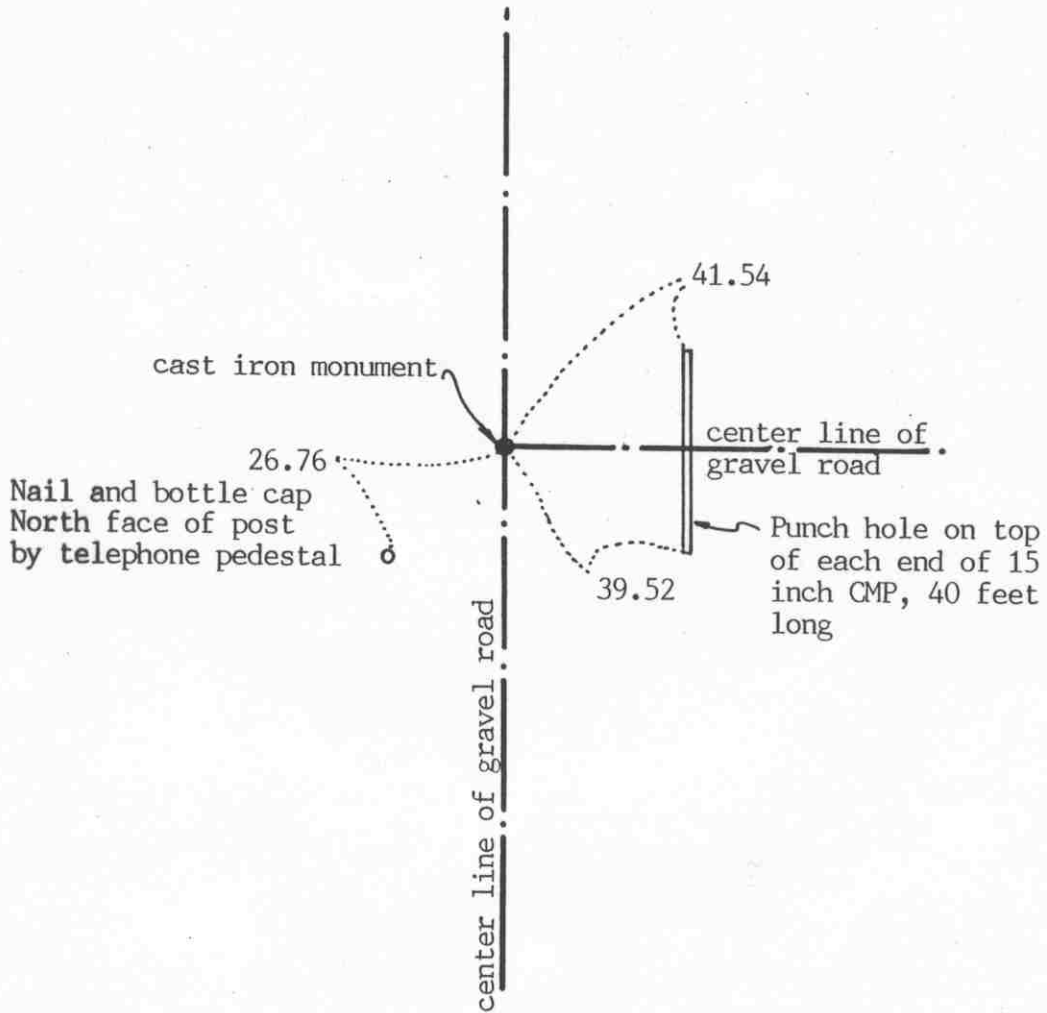
Certificate of Location of Government Corner

SKETCH OF REFERENCE TIES (NO SCALE)



SECTION 4

SECTION 3



Statement of evidence relative to this corner location on sheet 2

I hereby certify that this document was prepared by me or under my direct supervision.

Willard Pellinen
Willard Pellinen
McLeod County Surveyor
License No. 9626

Date June 13, 1992

OFFICE OF THE COUNTY RECORDER MCLEOD COUNTY, MINNESOTA.

I hereby certify that this document was filed in this office at 9 o'clock A.M. on the 15th day of July, 1992.

Carmen Ostlie, County Recorder

By _____, Deputy

Document No. 246440

EAST QUARTER corner, Section 4, Township 117 North, Range 28 West

Certificate of Location of Government Corner

1856. Oscar Taylor of the General Land Office set a post and marked 2 ash trees for bearing trees.

September 18, 1972. Mr. George Kazmarek, 63 years old, lived in the Northwest Quarter of Section and farmed part of the Northwest Quarter of Section 4, and lived in the area all his life, said he has never seen or heard of anyone seeing any monument or stone at the corner. He said the center line intersection of the roads is the corner. Mr. Felix Nowak, in the Southwest Quarter of Section 3 for 20 years, agrees.

May, 1972. McCombs Knutson Associates (Dickman Knutson, county surveyor) dug for the corner at the center line intersection of the roads. John Tupa from Hutchinson dug with a backhoe. Found no evidence of a corner.

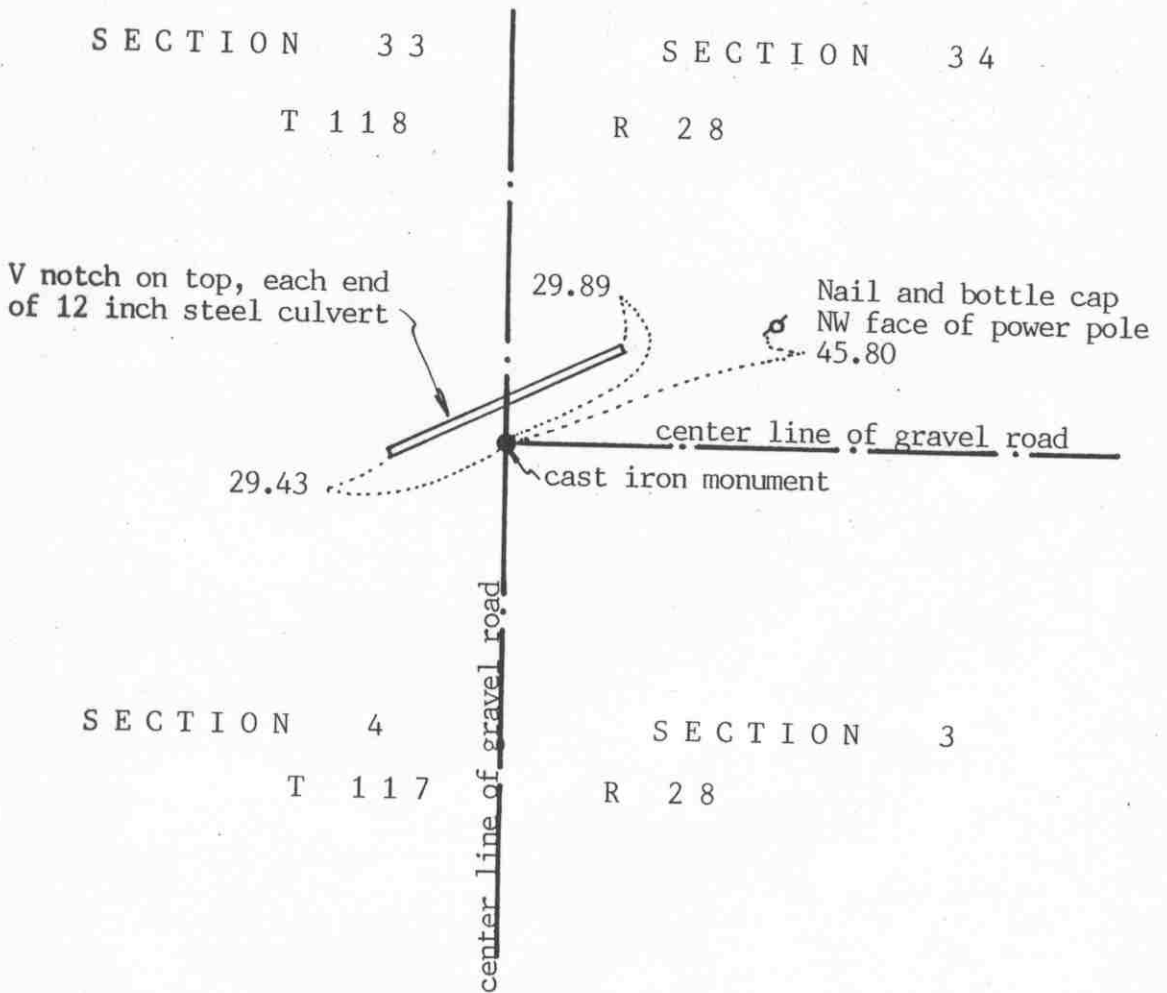
September 22, 1972. Knutson set a McLeod County cast iron monument at the center line intersection of the roads.

The monument set by Knutson is accepted as the corner location because it fits the occupation lines, the center lines of the roads, and there is no evidence to the contrary.

August 19, 1991. We found the monument in good condition and took new reference ties.

Certificate of Location of Government Corner

SKETCH OF REFERENCE TIES
(NO SCALE)



Statement of evidence relative to this corner location on sheet 2

I hereby certify that this document was prepared by me or under my direct supervision.

Willard Pellinen
Willard Pellinen
McLeod County Surveyor
License No. 9626

Date June 6, 1992

OFFICE OF THE COUNTY RECORDER
MCLEOD COUNTY, MINNESOTA.

I hereby certify that this document was filed in this office at 9 o'clock A.M. on the 15th day of July, 1992.

Armen Ostlie, County Recorder
By _____, Deputy

Document No. 246439

Certificate of Location of Government Corner

1855. John Ryan of the General Land Office set a post and marked a black oak, 2 bur oaks and an elm for bearing trees.

1972. Willard Mattson, Wright County Surveyor, set a cast iron monument at the corner.

September 22, 1972. We found the cast iron monument set by Mattson and took reference ties.

May 3, 1976. Jerry Uhde, Wright County surveyor, removed the cast iron monument and dug with a backhoe but found no other evidence of a corner.

July 7, 1976. The Wright County Surveyor reset the cast iron monument.

January 22, 1987. We found only 1 tie remaining. We dug up the corner and took additional ties. The monument was 12 inches below the surface of the road. We set a $\frac{1}{2}$ inch diameter iron pipe over the monument.

August 19, 1991. We checked the reference ties to the iron pipe.

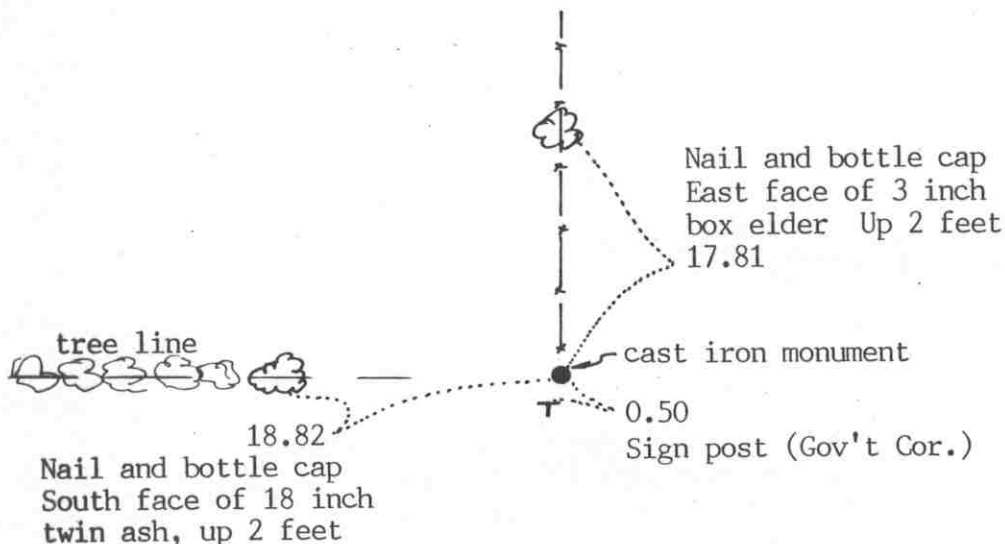
Certificate of Location of Government Corner



SKETCH OF REFERENCE TIES

(NO SCALE)

SECTION 33 T 118 R 28



SECTION 4 T 117 R 28

Statement of evidence relative to this corner location on sheet 2

I hereby certify that this document was prepared by me or under my direct supervision.

Willard Pellinen
 Willard Pellinen
 McLeod County Surveyor
 License No. 9626

Date July 11, 1992

OFFICE OF THE COUNTY RECORDER
 MCLEOD COUNTY, MINNESOTA.

I hereby certify that this document was filed in this office at 9 o'clock A.M. on the 20th day of July, 1992.

Carmen Ostlie, County Recorder

By _____, Deputy

Document No. 246512

NORTH QUARTER corner, Section 4, Township 117 North, Range 28 West

Certificate of Location of Government Corner

1885. This corner was established by John Ryan of the General Land Office. He set a post and marked an elm and an oak for bearing trees.

September 22, 1972. McCombs Knutson Associates (Dickman Knutson, county surveyor) found a cast iron monument set by Willard Mattson, Wright County Surveyor in 19 ____.

August 23, 1991. We found the monument in good condition and took new reference ties.

Certificate of Location of Government Corner



SKETCH OF REFERENCE TIES
(NO SCALE)

SECTION 33 T 118 R 28

SHAKOPEE LAKE

cast iron monument

50±

Nail and disc
West face of 4 inch oak
Up 1 foot
13.46

1.2 Sign (Gov't Cor)

fence

5.84

Nail and disc
North face of triple 10 inch basswood
Up 1 foot

8.69

Nail and disc
West face of 8 inch triple basswood
Up 1 foot

SECTION 4 T 117 R 28

Statement of evidence relative to this corner location on sheet 2

I hereby certify that this document was prepared by me or under my direct supervision.

Willard Pellinen

Willard Pellinen
McLeod County Surveyor
License No. 9626

Date July 11, 1992

OFFICE OF THE COUNTY RECORDER
MCLEOD COUNTY, MINNESOTA.

I hereby certify that this document was filed in this office at 9 o'clock A.M. on the 20th day of July, 1992.

Norman Ostlie, County Recorder

By _____, Deputy

Document No. 246513

Certificate of Location of Government Corner

1855. John Ryan of the General Land Office established this corner. He set a post and marked an elm and a black oak for bearing trees.

July 14, 1976. Jerry Uhde, Wright County Surveyor, set a cast iron monument along an old east-west fence by single proportionat measure between the government corners to the east and west.

August 23, 1991. We found the monument in good condition within a pile of rocks and took reference ties.

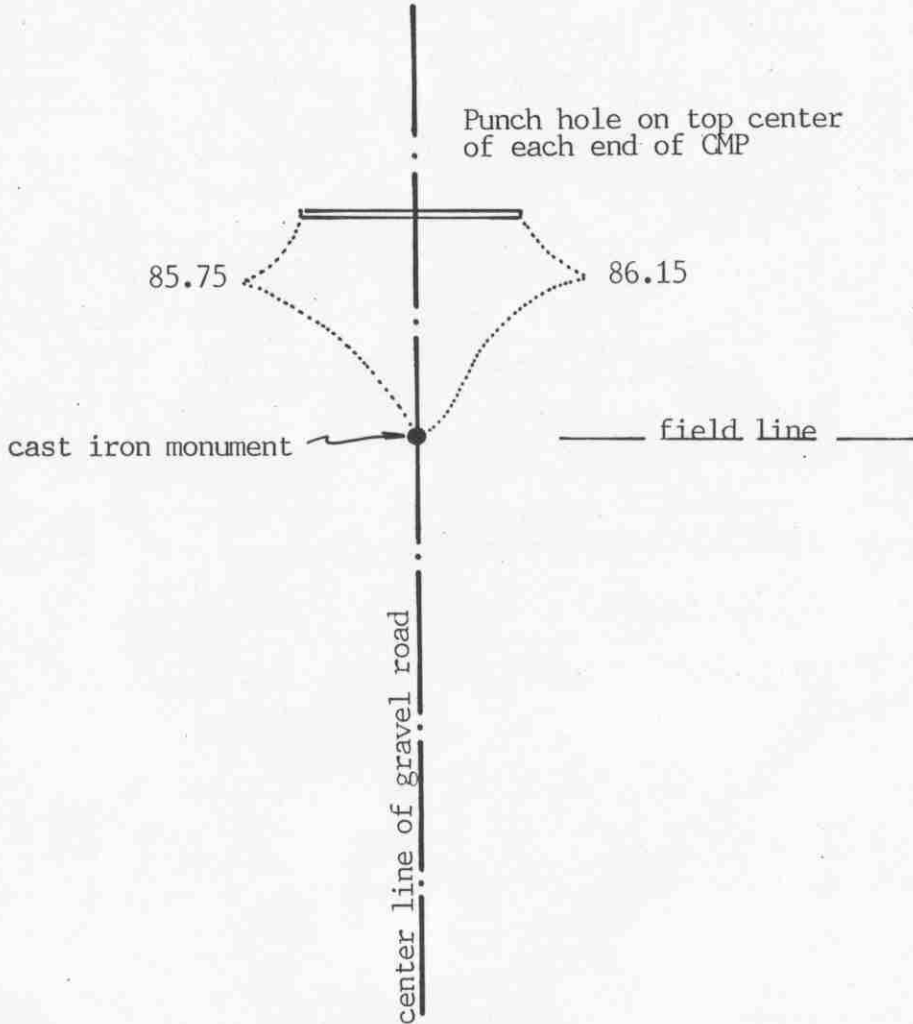
Certificate of Location of Government Corner

SKETCH OF REFERENCE TIES (NO SCALE)



SECTION 5

SECTION 4



Statement of evidence relative to this corner location on sheet 2

I hereby certify that this document was prepared by me or under my direct supervision.

Willard Pellinen

Willard Pellinen
McLeod County Surveyor
License No. 9626

Date February 22, 1992

OFFICE OF THE COUNTY RECORDER
MCLEOD COUNTY, MINNESOTA.

I hereby certify that this document was filed in this office at 9 o'clock A.M. on the 6th day of May, 1992.

Carmen Belie, County Recorder

By _____, Deputy

Document No. 245078

EAST QUARTER corner, Section 5, Township 117 North, Range 28 West

Certificate of Location of Government Corner

1856. Oscar Taylor of the General Land Office established this corner. He set a post and marked 2 oaks for bearing trees.

November 15, 1924. E. L. Higgins, surveyor, found an oak post at the corner. His field notes show a distance of 2642 feet to the southeast corner of Section 5.

April 22, 1925. Carlisle Madson, Sr., county surveyor, found a stake at the corner and he measured 2640.5 feet to the southeast corner of Section 5.

1972. McCombs Knutson Associates (Dickman Knutson, county surveyor) dug for the corner, John Tupa from Hutchinson with a backhoe. They found no evidence of a corner.

September 22, 1972. Knutson set a McLeod County cast iron monument in the center line of the north-south road at the 1925 distance by Madson from the southeast corner and took available reference ties.

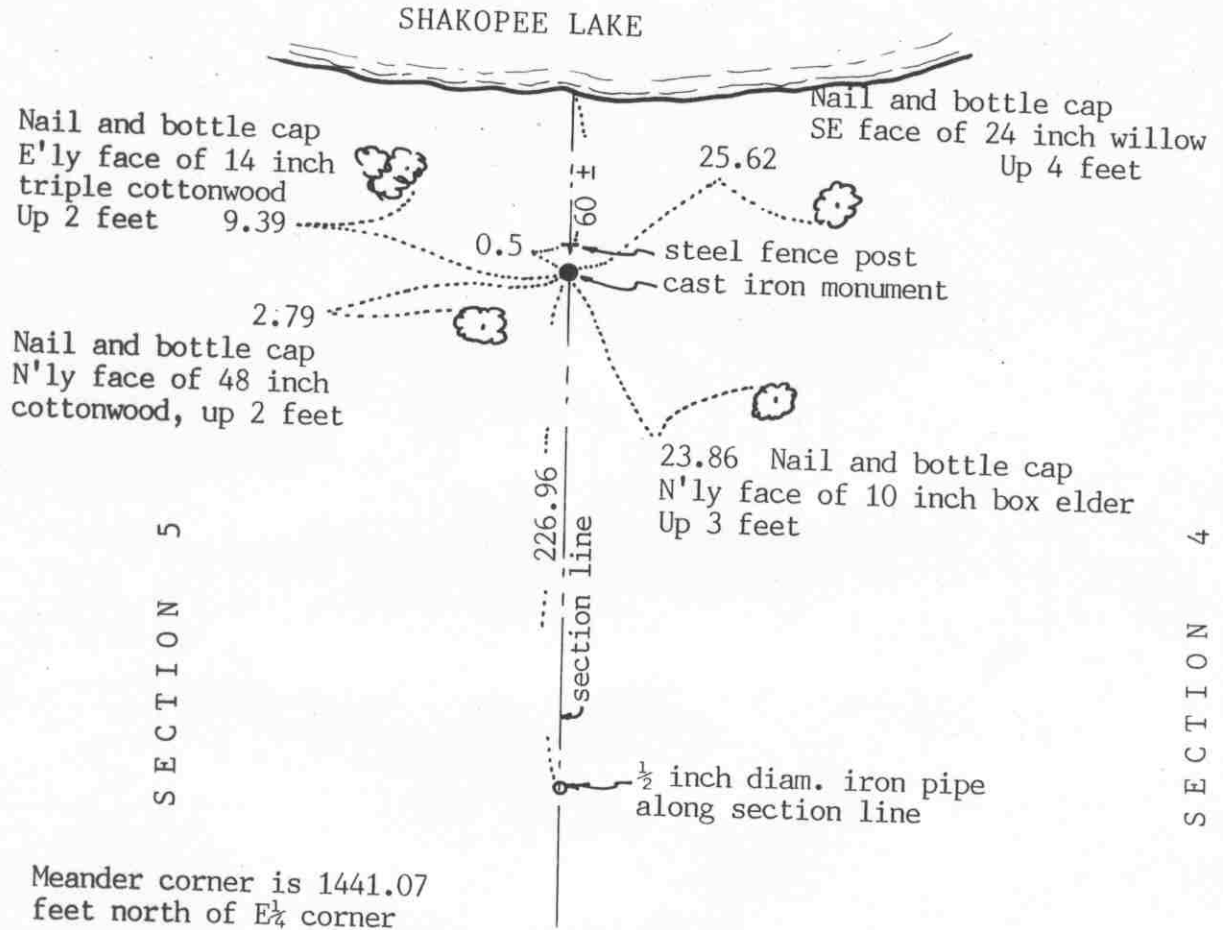
August 14, 1991. We found the monument in good condition and checked the reference ties.

The monument set by Knutson is accepted as marking the location of the quarter corner. It fits occupation lines, the center line of the road and the field line to the east and it was set at the 1925 county surveyor distance from the southeast corner.

M.C. NO. 13 corner, Section 5, Township 117 North, Range 28 West

Certificate of Location of Government Corner

SKETCH OF REFERENCE TIES (NO SCALE)



Statement of evidence relative to this corner location on sheet 2

I hereby certify that this document was prepared by me or under my direct supervision.

Willard Pellinen
Willard Pellinen
McLeod County Surveyor
License No. 9626

Date April 30, 1992

OFFICE OF THE COUNTY RECORDER
MCLEOD COUNTY, MINNESOTA.

I hereby certify that this document was filed in this office at 9 o'clock A.M. on the 6th day of May, 19 92.

Carmen Ostlie, County Recorder

By _____, Deputy

Document No. 245077

Certificate of Location of Government Corner

1856. Oscar Taylor of the General Land Office set a meander post and marked an oak and an elm for bearing trees.

January 29, 1987. We set a half inch diameter iron pipe at the computed location of the meander corner along the east line of Section 5, south of Shakopee Lake.

May 28, 1987. We set a McLeod County cast iron monument at the corner and took available reference ties.

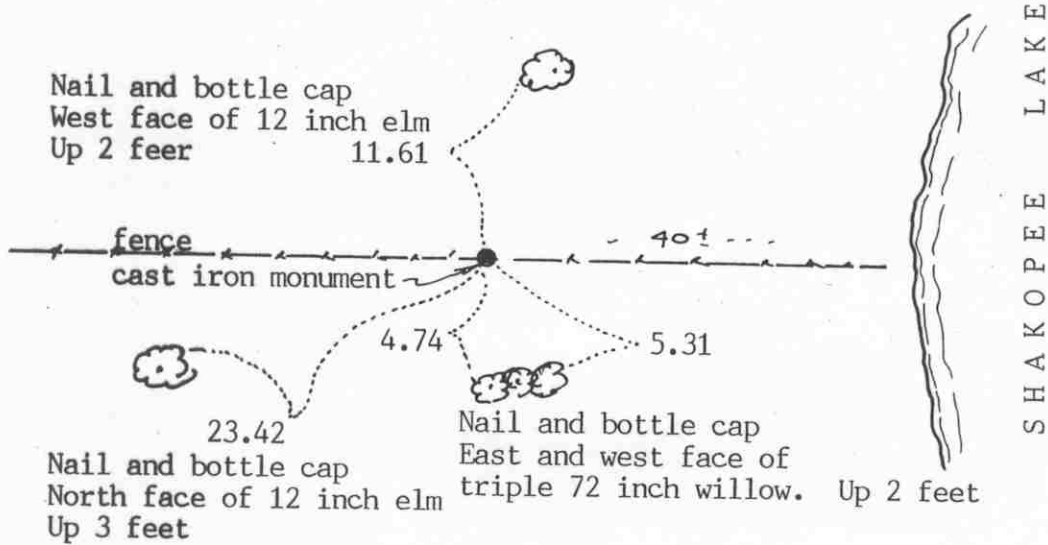
August 14, 1991. We found the monument in good condition and checked the reference ties.

Certificate of Location of Government Corner



SKETCH OF REFERENCE TIES
(NO SCALE)

SECTION 32 T 118 R 28



SECTION 5 T 117 R 28

Statement of evidence relative to this corner location on sheet 2

I hereby certify that this document was prepared by me or under my direct supervision.

Willard Pellinen
Willard Pellinen
McLeod County Surveyor
License No. 9626

Date July 11, 1992

OFFICE OF THE COUNTY RECORDER
MCLEOD COUNTY, MINNESOTA.

I hereby certify that this document was filed in this office at 9 o'clock A.M. on the 20th day of July, 1992.

Armen Ostlie, County Recorder

By _____, Deputy

Document No. 246514

Certificate of Location of Government Corner

1855. John Ryan of the General Land Office established this corner. He set a post and marked 2 aspens for bearing trees.

July 14, 1976. Jerry Uhde, Wright County Surveyor, set a cast iron monument using single proportionate measure between the government corners to the east and west.

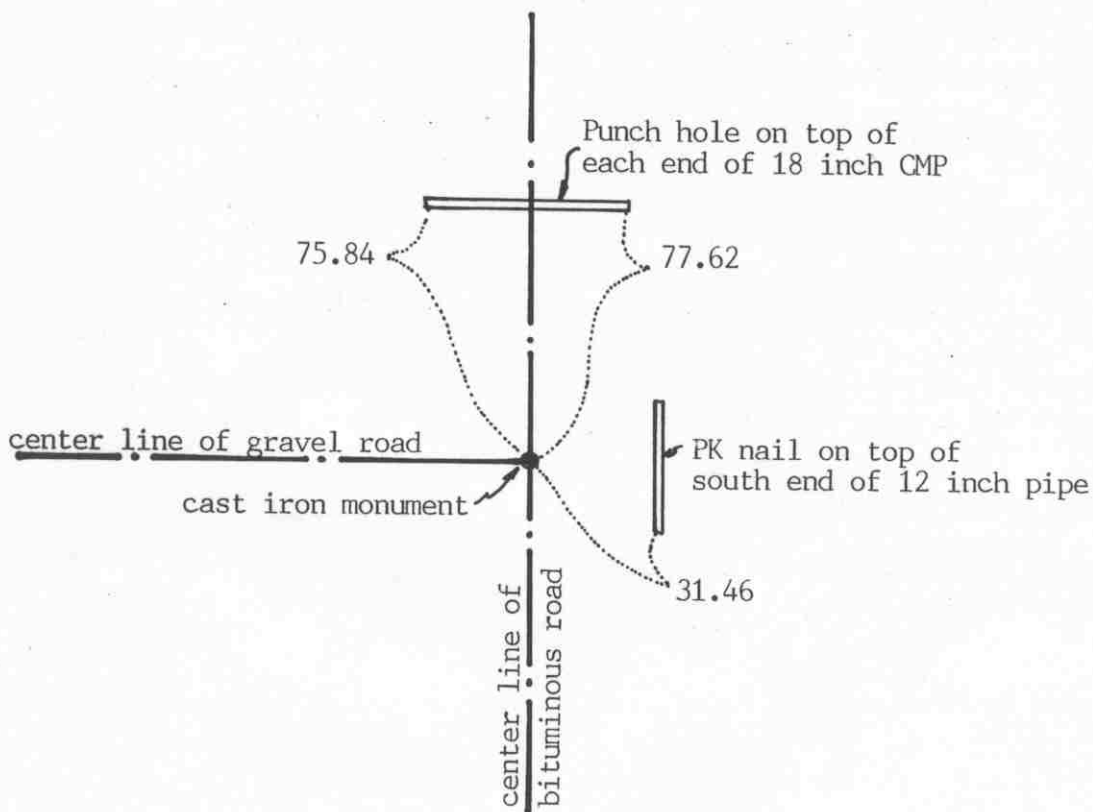
August 23, 1991. We found the monument in good condition but all the reference ties destroyed. We took new reference ties.

NORTH QUARTER corner, Section 5, Township 117 North, Range 28 West

Certificate of Location of Government Corner

SKETCH OF REFERENCE TIES (NO SCALE)

SECTION 32 T 118 R 28



SECTION 5 T 117 R 28

Statement of evidence relative to this corner location on sheet 2

I hereby certify that this document was prepared by me or under my direct supervision.

Willard Pellinen

Willard Pellinen
McLeod County Surveyor
License No. 9626

Date Feb. 21, 1992

OFFICE OF THE COUNTY RECORDER
MCLEOD COUNTY, MINNESOTA.

I hereby certify that this document was filed in this office at 9 o'clock A.M. on the 6th day of May, 1992.

Carmen O'Brien, County Recorder

By _____, Deputy

Document No. 245079

Certificate of Location of Government Corner

1855. John Ryan of the General Land Office established this corner. He set a post and marked 2 butternut trees for bearing trees.

November 15, 1924. Survey notes by E. L. Higgins, surveyor, show a stone at the corner.

1972. The Wright County Surveyor replaced an iron pin which was set by the Wright County Highway Department with a cast iron monument.

May 13, 1976. Wright County Surveyor removed the cast iron monument and dug for the corner with a backhoe. Found nothing.

July 14, 1976. The Wright County Surveyor reset a cast iron monument at the corner.

August 14, 1991. We found the monument in good condition and checked the reference ties.

EAST QUARTER corner, Section 6, Township 117 North, Range 28 West

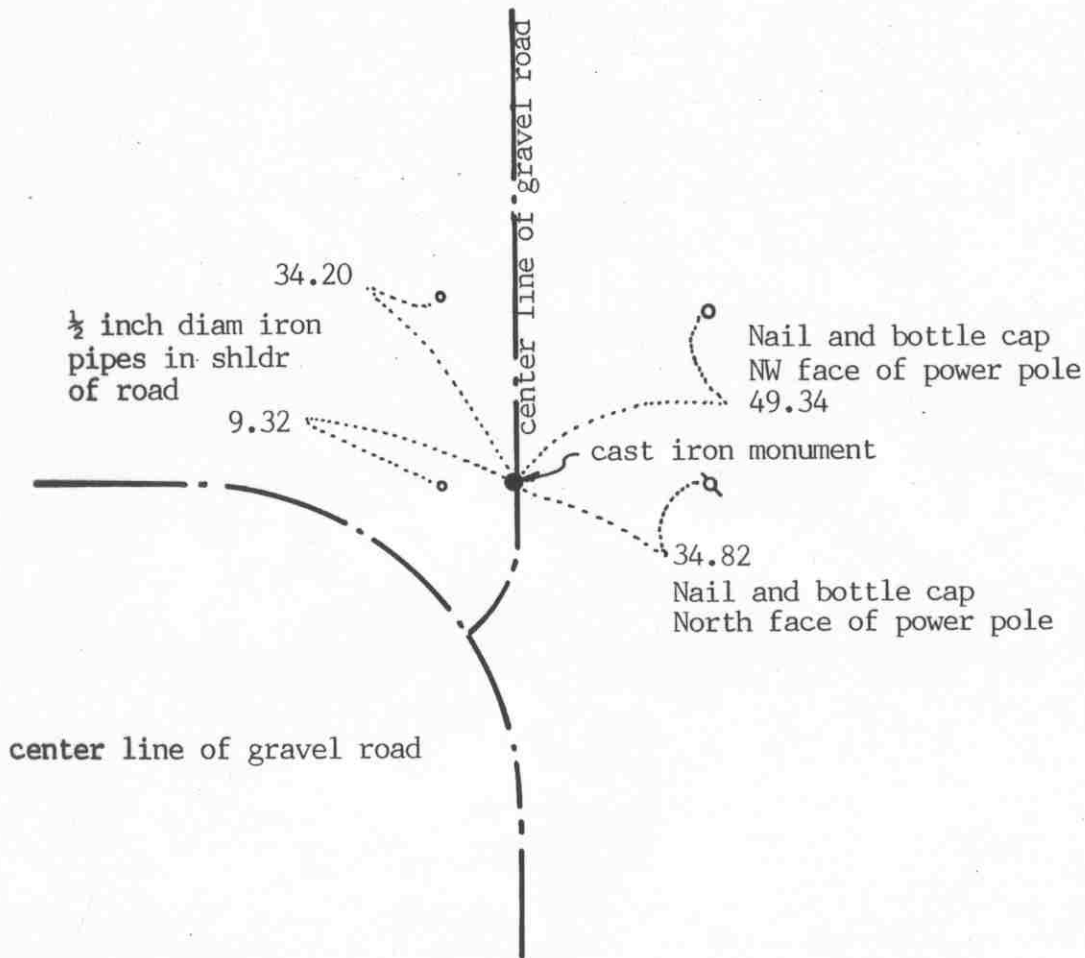
Certificate of Location of Government Corner

SKETCH OF REFERENCE TIES (NO SCALE)



SECTION 6

SECTION 5



Statement of evidence relative to this corner location on sheet 2

I hereby certify that this document was prepared by me or under my direct supervision.

Willard Pellinen

Willard Pellinen
McLeod County Surveyor
License No. 9626

Date June 5, 1992

OFFICE OF THE COUNTY RECORDER
MCLEOD COUNTY, MINNESOTA.

I hereby certify that this document was filed in this office at 9 o'clock A.M. on the 9th day of June, 1992.

Armen Ostlie, County Recorder

By _____, Deputy

Document No. 245782

EAST QUARTER corner, Section 6, Township 117 North, Range 28 West

Certificate of Location of Government Corner

1856. Oscar Taylor of the General Land Office set a post and marked 2 aspens for bearing trees.

November 15, 1924. E.L.Higgins, surveyor, found a stone in the center of the north-south road.

April 22, 1925. Carlisle Madson, Sr., county surveyor, found a stone at the corner.

19?? The county highway department found a stone with a chiseled + on top.

April 14, 1973. McCombs Knutson Associates (Dickman Knutson, county surveyor) found a spike at the corner.

July 1973. Knutson dug for the corner, John Tupa from Hutchinson with a backhoe. They found a stone, top of stone down 1 foot below the road surface. Stone was triangular, 8 inches wide at the bottom, with a sharp point up. They the stone off and dug deeper. Down $2\frac{1}{2}$ feet below the surface they found another stone, directly below the first stone. This stone was 16 inches by 16 inches with a chiseled + on top. They left the stone in place.

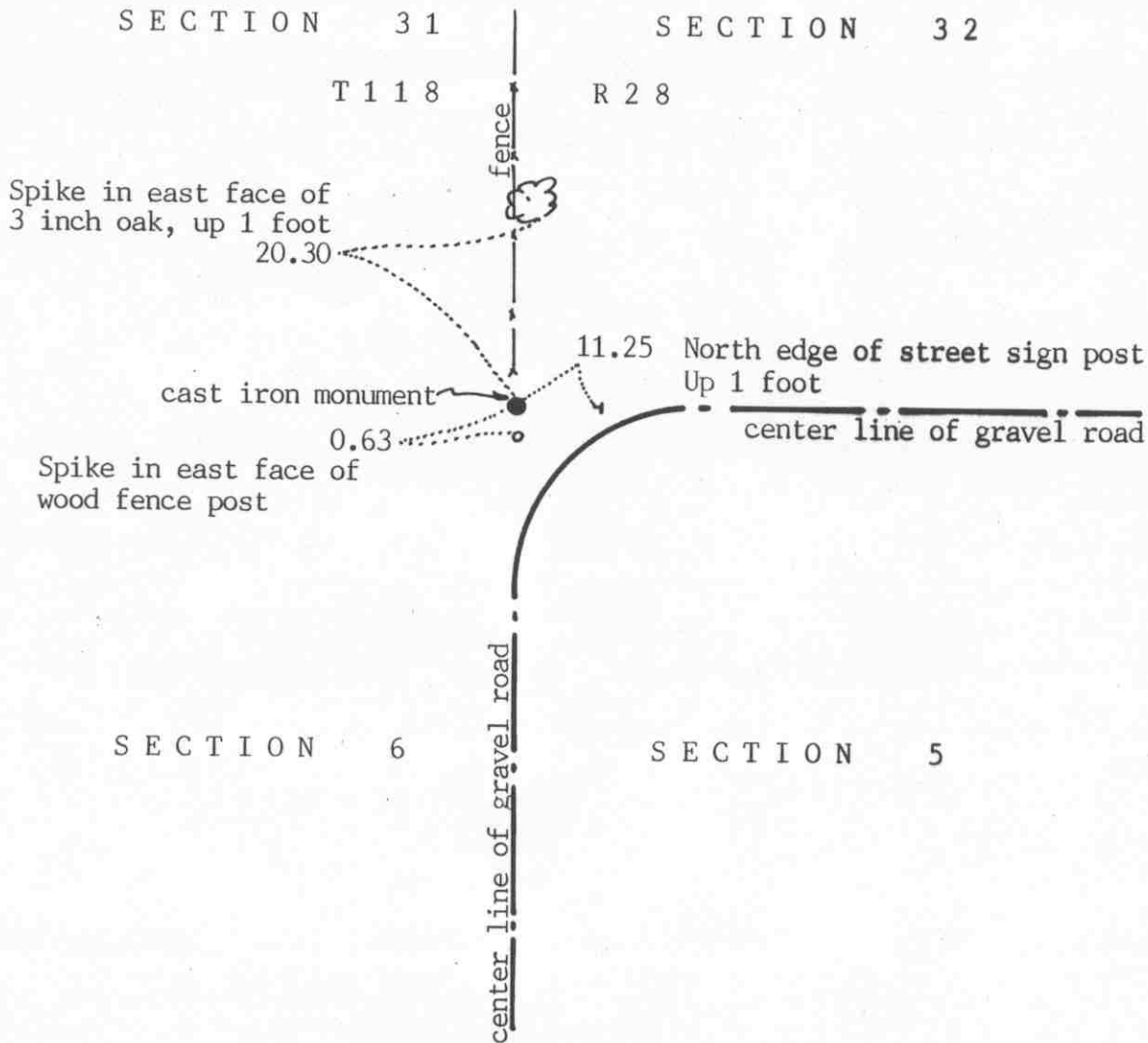
April 21, 1973. Knutson set a McLeod County cast iron monument at the corner.

August 14, 1991. We found the monument in good condition down 10 inches below the road surface. We took new reference ties.

We accept the monument set by Knutson as marking the correct location of the quarter corner. It is set over an older monument which has perpetuated the location of the corner.

Certificate of Location of Government Corner

SKETCH OF REFERENCE TIES (NO SCALE)



Statement of evidence relative to this corner location on sheet 2

I hereby certify that this document was prepared by me or under my direct supervision.

Willard Pellinen

Willard Pellinen
McLeod County Surveyor
License No. 9626

Date June 7, 1992

OFFICE OF THE COUNTY RECORDER
MCLEOD COUNTY, MINNESOTA.

I hereby certify that this document was filed in this office at 9 o'clock A.M. on the 9th day of June, 1992.

Carmen Ostlie, County Recorder

By _____, Deputy

Document No. 245781

Certificate of Location of Government Corner

1855. John Ryan of the General Land Office established this corner. He set a post and marked 2 elms, an ash and an oak for bearing trees.

1972. The Wright County Surveyor set a cast iron monument on the north fence line and on the center line P.I. of roads to the east and south.

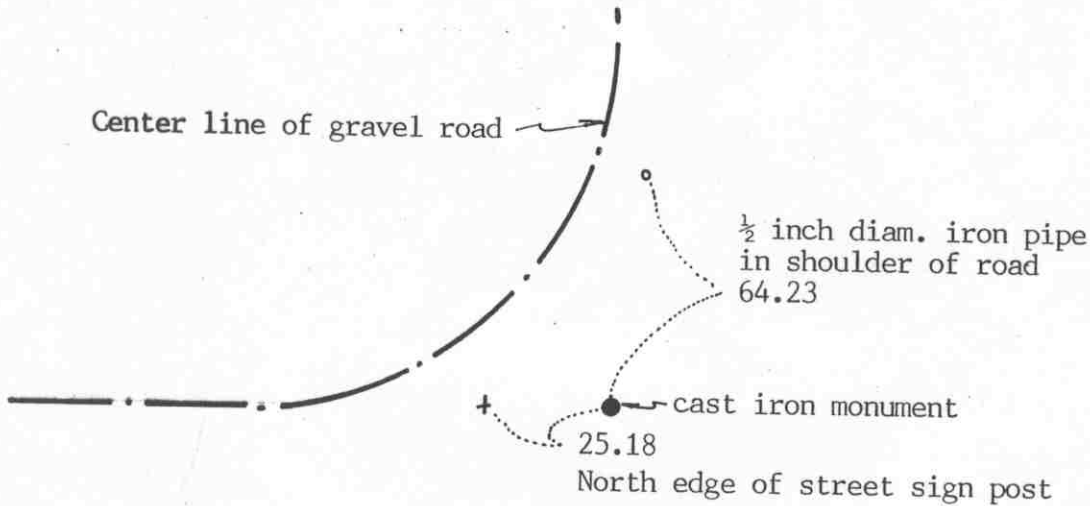
August 14, 1991. We found the monument flush with the ground, in good condition. All old ties had been destroyed so we took new ties.

Certificate of Location of Government Corner



SKETCH OF REFERENCE TIES
(NO SCALE)

SECTION 31 T 118 R 28



SECTION 6 T 117 R 28

Statement of evidence relative to this corner location on sheet 2

I hereby certify that this document was prepared by me or under my direct supervision.

Willard Pellinen

Willard Pellinen
McLeod County Surveyor
License No. 9626

Date July 11, 1992

OFFICE OF THE COUNTY RECORDER
MCLEOD COUNTY, MINNESOTA.

I hereby certify that this document was filed in this office at 9 o'clock A.M. on the 20th day of July, 1992.

Carman Ostlie, County Recorder

By _____, Deputy

Document No. 246515

Certificate of Location of Government Corner

1855. John Ryan of the General Land Office set a post and marked 2 aspens for bearing trees.

July 7, 1976. Jerry Uhde, Wright County Surveyor, set a Wright County cast iron monument at the corner using 1884 survey distances by Strong from the section corners.

August 22, 1991. We found the monument in good condition and took new reference ties.

NORTHEAST corner, Section 1, Township 117 North, Range 29 West

Certificate of Location of Government Corner

SKETCH OF REFERENCE TIES (NO SCALE)

SEC. 36, T118, R29

SEC. 31, T118, R28

Nail and bottle cap in
NE face of post by tel.
ped.

36.45

39.39

field line

South edge of sign post

24.83

Chiseled + on top of each
end of 24 inch conc. culv.
54 feet long

1/2 inch iron
pipes on center
line of gravel road
(straight line)

center line of gravel road

CIM

44.88

SEC. 1, T117, R29

SEC. 6, T117, R28

Statement of evidence relative to this corner location on sheet 2

I hereby certify that this document
was prepared by me or under my
direct supervision.

OFFICE OF THE COUNTY RECORDER
MCLEOD COUNTY, MINNESOTA.

Willard Pellinen
Willard Pellinen
McLeod County Surveyor
License No. 9626

I hereby certify that this document was filed in this
office at 9 o'clock A.M. on the 26th day
of July, 1994.

Date March 10, 1991

CARMEN OSTLIE MILDOR, McLEOD COUNTY RECORDER, County Recorder

By Thyllis Hopewick, Deputy

Document No. 260933

NORTHEAST corner, Section 1, Township 117 North, Range 29 West**Certificate of Location of Government Corner**

- August, 1855. John Ryan of the General Land Office set a post at the corner and marked 2 willows and 2 aspen for bearing trees.
1970. Oscar Anderson, 71 years old, has lived in the Southwest Quarter of Section 31, T118, R28 all his life, said 40 years ago when they rebuilt the road, an old "marker" was found and they put in an iron marker. He said it could be 4 or more feet down below the road surface.
- October 2, 1970. McCombs Knutson Associates (Dickman Knutson, county surveyor) dug for the corner, John Tupa from Hutchinson with a backhoe. Down 5½ feet below the road surface they found a 3 inch angle iron.
- October 13, 1970. Knutson set a McLeod County cast iron monument.
- May 8, 1981. We found the cast iron monument down 7 inches below the road surface in good condition. We set ½ inch iron pipes 100.00 and 200.00 feet east (on a straight line) for reference ties to replace the corner after road construction.
- June 18, 1986. We found the monument down 2½ feet below the road surface, in good condition and checked ok with the 1981 reference ties. We took additional reference ties. We set a ½ inch by 14 inch iron pipe over the monument, 3 inches below the road surface.
- May 2, 1990. We found the iron pipe and the reference ties good.
- We accept the angle iron found by Knutson as having perpetuated the correct location of the section corner.
- May 11, 1994. Jerry Uhde, Wright County Surveyor, set a cast iron monument, marked section corner, above the existing cast iron monument.

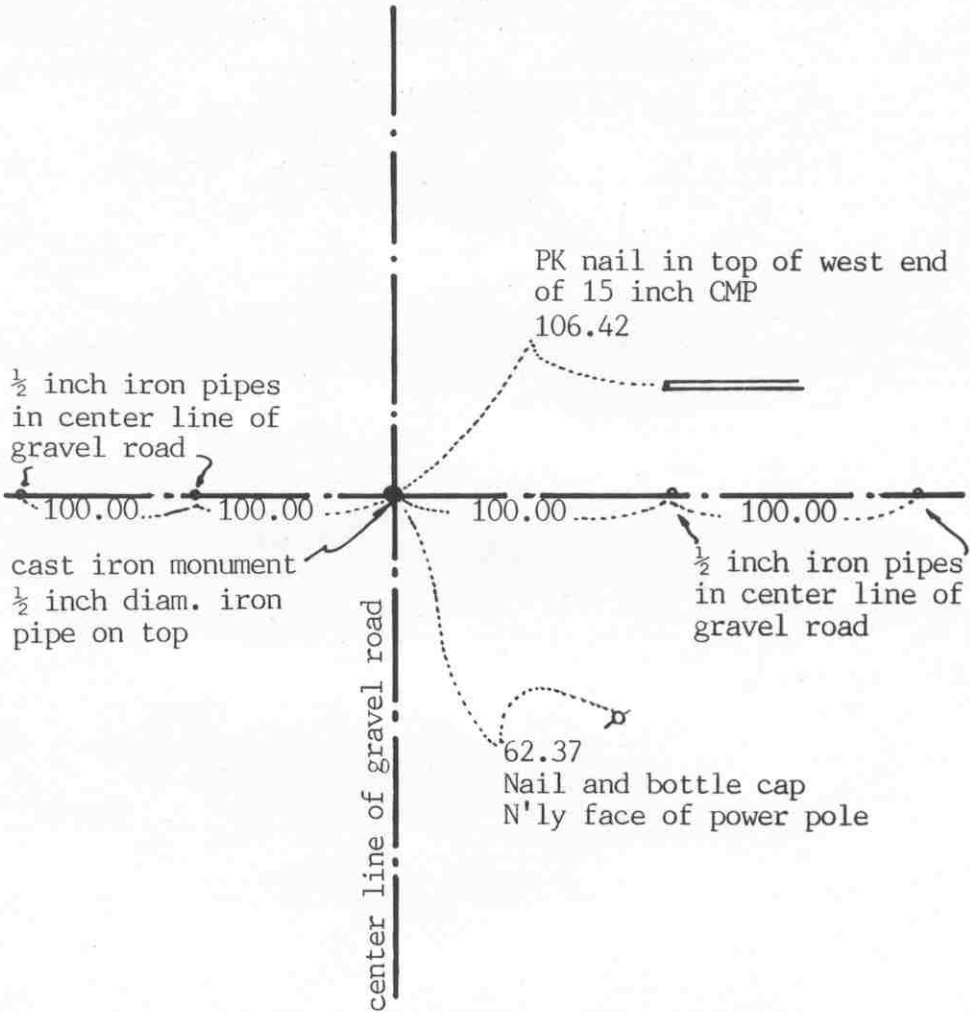
Certificate of Location of Government Corner

SKETCH OF REFERENCE TIES

(NO SCALE)



SECTION 1, T 117, R 29



SECTION 6, T 117, R 28

Statement of evidence relative to this corner location on sheet 2

I hereby certify that this document was prepared by me or under my direct supervision.

Willard Pellinen
 Willard Pellinen
 McLeod County Surveyor
 License No. 9626

Date March 10, 1991

OFFICE OF THE COUNTY RECORDER
 MCLEOD COUNTY, MINNESOTA.

I hereby certify that this document was filed in this office at 2 o'clock P.M. on the 1st day of April, 1991.

Carmen Ostlie, County Recorder

By _____, Deputy

Document No. 238149

Certificate of Location of Government Corner

August, 1855. John Ryan of the General Land Office set a post and marked 2 bur oaks for bearing trees.

September 19, 1969. McCombs Knutson Associates (Dickman Knutson, county surveyor) measured the east line of Section 1 and set a temporary quarter corner at the center line intersection of the roads .

April 17, 1970. Knutson dug for the corner, John Tupa from Hutchinson with a backhoe. They found a rotted wood stake down 3 feet below the road surface.

Knutson set a cast iron monument. (date not known)

April 8, 1981. We found the monument in good condition and set $\frac{1}{2}$ inch diameter iron pipes 100.00 feet east and 100.00 feet west of the monument (in a straight line) for reference ties. Old ties to be destroyed by road construction.

June 18, 1986. We found the monument buried 3 feet below the road surface by road construction. Ties taken before road construction check ok. We set a 14 inch by $\frac{1}{2}$ inch diameter iron pipe over the monument and took new reference ties.

May 2, 1990. We found the iron pipe and the reference ties good.

We accept the wood stake found by Knutson as having perpetuated the correct location of the quarter corner.